



# Fitting Instructions

TOWBAR VW43CQ  
For VW GOLF and BORA 1998-  
and SEAT LEON 2000-

## MATERIALS

A	1	Cross Tube		
ZF	1	Flanged Neck to EC 94/20 - A50-1 (ZF3012-A)		
B	2	Neck Spacers (ZSB1)		
C	2	Sidearms		
D	6	M10 x 40 x 1.5mm Bolts, Lock Washers and Large Flat Washers (30mm O.D.)		
E	2	M12 x 100 x 1.75 Bolts and Nyloc Nuts (torque setting <b>139 Nm</b> )		
F	1	Electrical Plate (ZEP1)	G	1 Electrical Plate Angle (ZEQ1)
H	1	M10 x 25 x 1.5 Bolt, Nut, Lock Washer and 2 Flat Washers (20mm O.D)		
CB	2	M16 x 50 x 2.0mm Coupling Bolts, Nuts and Lock Washers		

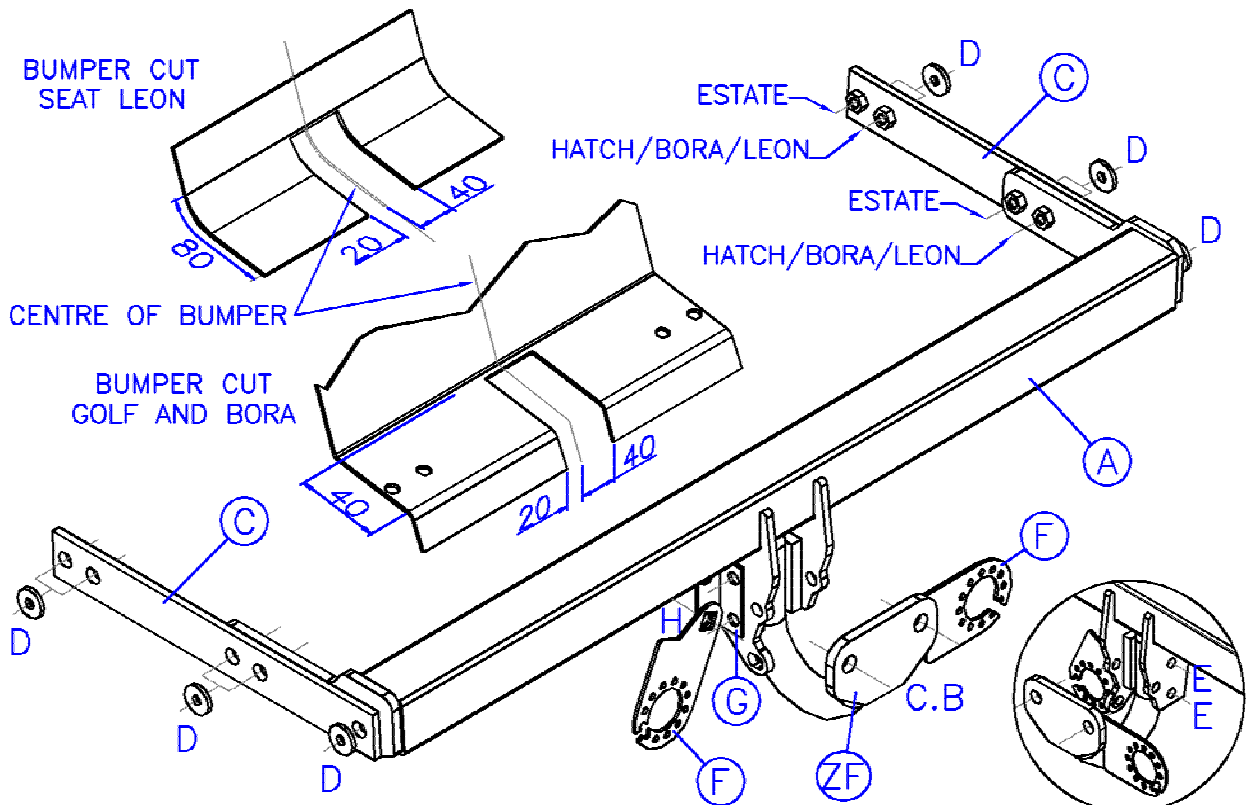
## FITTING

1. Remove bumper (Torx head screws around each wheel arch, along lower edge of rear panel, beneath each light cluster (light cluster must be removed for all models except Seat Leon) and along top edge of bumper).
2. Remove bumper cross beam from vehicle and discard (or retain for fitment when bracket is removed). Position Sidearms (C) inside chassis and loosely secure using Bolts (D) at existing holes (covered in tape) with Large Flat Washers - Note: access to the forward mountings (D) is very poor, this is greatly improved if the wheel arch protectors are removed. Secure Cross Tube (A) to Sidearms (C) using Bolts (D) with Flat Washers.
3. Attach Flanged Neck (ZF) to Cross Tube (A) using Bolts (E) with Neck Spacers (B) (N.B Grade 10.9 Torque Setting 139Nm).
4. **Tighten all bolts.**
5. Cut bumper as shown, refit bumper, light clusters etc. If the electrical plate is positioned as shown using Bolts (H), a slot will need to be made in the bumper, the position and extent of which will depend on the orientation of parts F and G. It can also be positioned to the right or left of the towball (as shown). **Note:** Protect the lower edge of bumper whilst refitting over the crossbar as it can easily be damaged.

**Note:** This towbar must be used with either a Witter Towball (part number Z1) or Class A50-1 or A50-X towball dimensionally conforming to A50-1 with a 'D' and 'S' value greater than or equal to that of the towbar. Also for use with Witter Removable Quantum Towball Unit (part number ZQ3012).

Please refer to the vehicle specification for the trailer weight and nose limits, which **must be observed**.

**Recommended torque settings:** M8 - 27Nm, M10 - 53 Nm, M12 - **139 Nm**, M16 - 214 Nm





# Fitting Instructions

QUANTUM DETACHABLE  
TOWBALL SYSTEM  
(ZQ XXXX)

## MATERIALS

A	1	Receptor/Socket for Towball
T	1	Detachable Towball
K	2	Keys for Detachable Towball
X	4	M12 x 25 x 1.75mm Bolts, Spring Washers and Flat Spacer Washers (25mm O.D)
FC	1	Fixed Weather Cover
RC	1	Removable Weather Cover
L	1	Centreline Label
B	1	Bag
ZQM1	1	Operation Manual

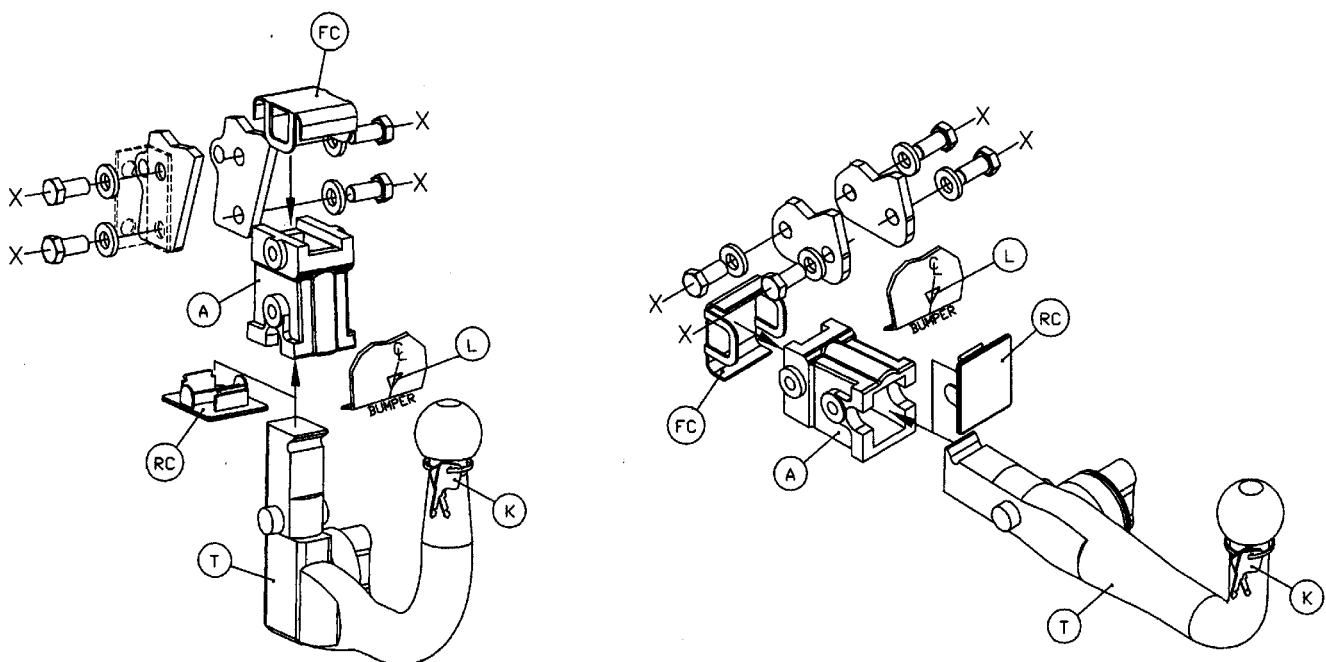
## INSTALLATION PROCEDURE

1. Place black plastic fixed weather cap (FC) over forward/ (horizontal system) / upper (vertical system) holes of receptor/socket (A), insert receptor/socket (A) into gap between mounting plates on the towbar, and loosely attach using bolts (X).
  - Notes: (ZEQ1), which is provided as part of the towbar should be refitted on left hand side, together with the electrical socket mounting plate (ZEP1). Only use the 25mm O.D Flat Spacer Washers (X) where there are no loose components attached, i.e. ZEQ1 (electrical socket mounting plate bracket, shown in dashed linetype below).
2. Insert detachable towball unit (T), using procedure detailed in Operation Manual provided, and ensure correct vertical alignment of the towball before fully tightening bolts (X).
3. Attach centreline label (L) to lower edge of bumper.
4. Remove keys (K) from neck of towball, and record the key number in the Operation Manual, together with the fitters name, telephone number, date fitted, vehicle model and registration number and towbar part number.

**Bumper Cut – It may be necessary to trim the bumper to allow adequate clearance around the operation handle on the right hand side.**

**Note:** It is essential that the customer/end user is familiar with the operation of the towball system, as detailed in the operation manual, which must be handed to the customer/end user.

**Recommended torque settings:** M12 - 95 Nm



Important – It is essential to ensure that the Operation Manual is in the possession of the end user.